

SD007-PFX (BPChecker3000) Ver. 2 Update Manual

Jul 6, 2018

This manual describes the procedures for installing an update module that you have downloaded from the Kikusui website into a PC and PFX25x2.

The version number indicated in this manual may not be the latest version. Replace it with the latest version number that you have in hand as you read this manual.

Please read before updating.

The following notes apply if you are updating version 1 to version 2.

1. **When you're using Ver1.0.0.0-Ver1.4.9.0, this update is applied.** For a custom-made product, Ver1.5.0.0-Ver1.9.9.9 can't use this update.
2. As a result of functional additions in version 2, the test condition file was changed from the data format used in version 1.
When a test condition file created with version 1 is opened with version 2, the data is automatically updated for version 2.
As such, new test conditions created with version 2 and test conditions created with version 1 that have been opened and saved with version 2 cannot be used with version 1. We recommend that you back up test conditions created with version 1 in a separate folder or the like.
3. Version 2 is designed so that test conditions acquired with version 1 can be viewed with Graphviewer of version 2, but problems may occur depending on the content of test data, the PC performance, and so on.
If a problem occurs such as not being able to open test conditions of version 1 after updating to version 2, it is possible to revert temporarily to version 1. See "Reverting Back to the Old Version" (chapter 7).
4. Version 2 does not support Windows XP or Windows 10.
5. The software environmental settings (graph axis, color, etc.) are passed on from version 1, but some settings may be reset to default values.

1. Preparation

1-1 Preparation 1

Check the following items before starting installation.

Check that SD007-PFX BPChecker3000 is installed.

Check that none of the following SD007-PFX BPChecker3000 component applications are running.

IO Config

Test Condition Editor

Test Executive

Graph Viewer

If any of the applications are running, close them before proceeding further.

Check that the PFX25x2 (hardware) is connected to the PC and communication can be performed normally.

(The LAN connection can be through either a fixed IP or DHCP.)

1-2 Preparation 2

Obtaining the update module

Access the Kikusui website (<http://www.kikusui.co.jp/>).

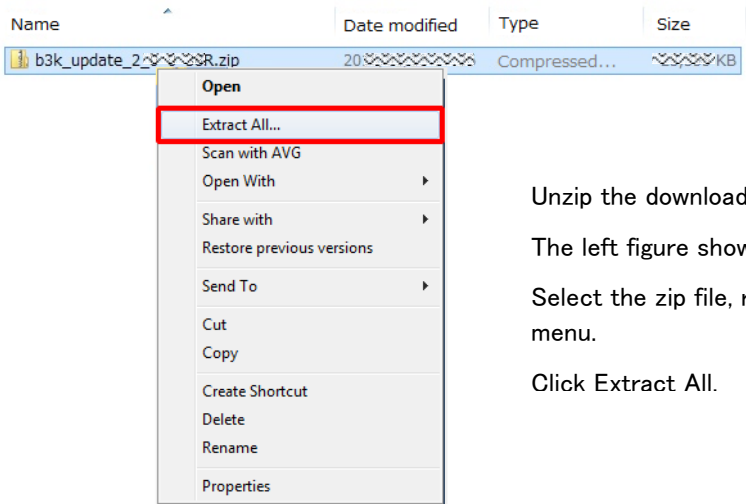
From the DOWNLOAD page,

under “Instruments Drivers/ Updaters/ Application (Free),”

click SD007-PFX BPChecker3000 > Application Update.

When the download page appears, download the following update module.

B3k_update_2_x_x_xxR.zip



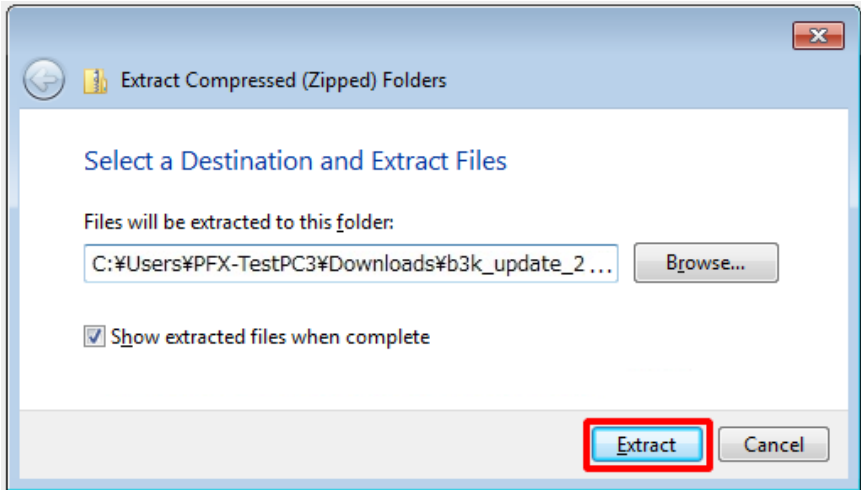
Unzip the downloaded zip file.

The left figure shows an example for Explorer.

Select the zip file, right-click to display a shortcut menu.

Click Extract All.

Click Extract.



The following files will be extracted. (The update time and size may differ from those shown in the following figure.)

Name	Date modified	Type	Size
b3k_update_2_0_2_11R.exe	201...	Application	KB
SD007-BPC_V1toV2.bat	201...	Windows bat...	1 KB

2. Updating SD007-PFX BPChecker3000

This section explains the SD007-PFX BPChecker3000 update procedure.

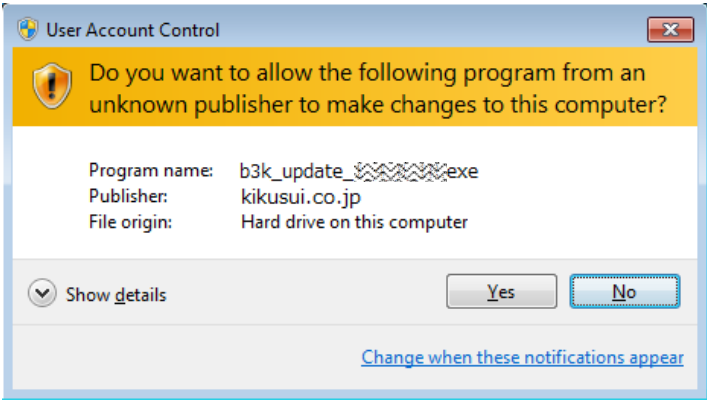
2-1 Step1

Double-click b3k_update_2_0_2_11R.exe that you extracted.

Name	Date modified	Type	Size
b3k_update_2_0_2_11R.exe	201...	Application	KB
SD007-BPC_V1toV2.bat	201...	Windows bat...	1 KB

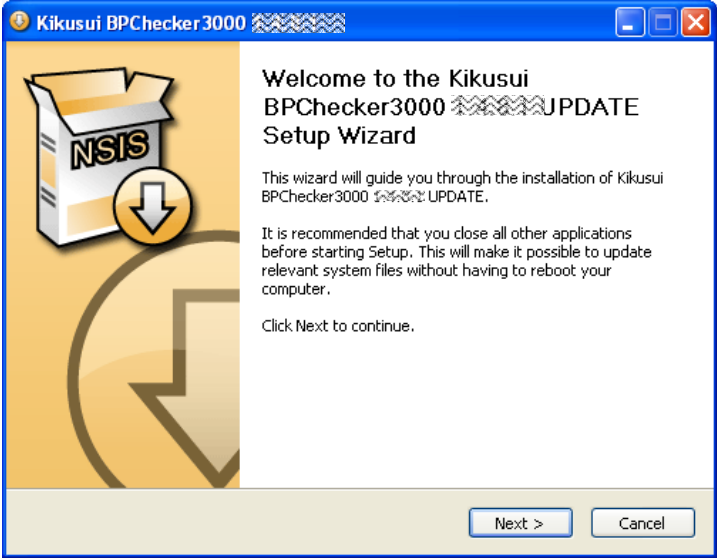
2-2 Step2

Depending on the PC environment, a user account control confirmation screen may appear. Click Yes.



2-3 Step 3

A setup wizards starts. Click **Next**.



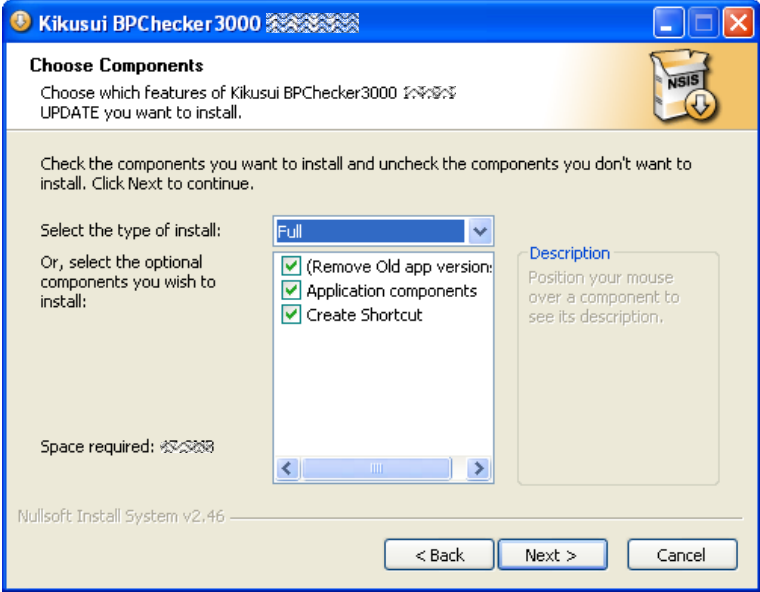
2-4 Step 4

A license agreement window appears. If you agree to the terms, click **I Agree**.



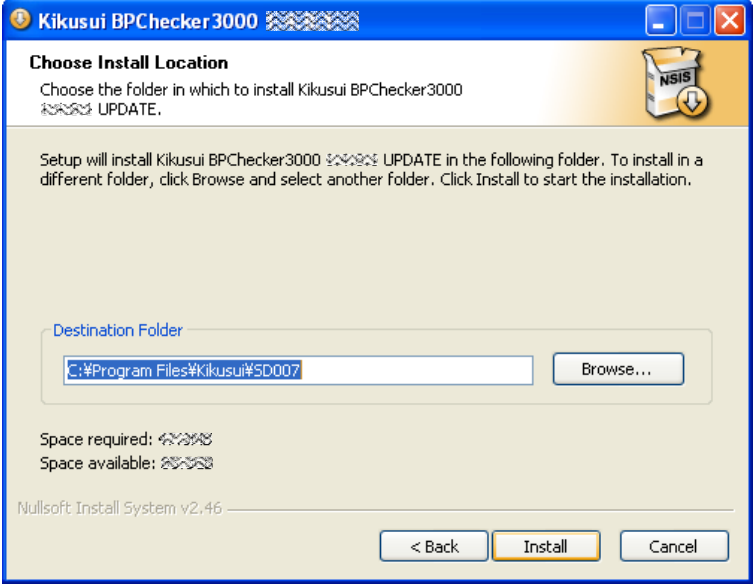
2-5 Step 5

Under normal circumstances, simply click **Next**.



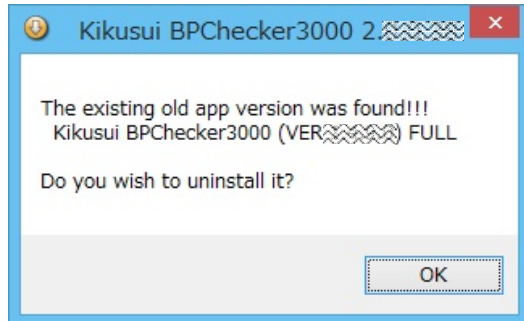
2-6 Step 6

Select the installation folder, and click **Install** to start the application installation.



2-7 Step 7

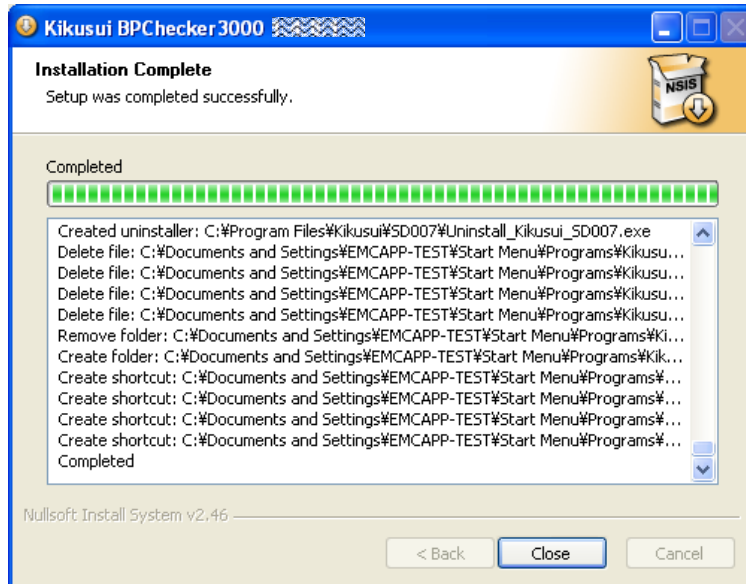
The old version must be uninstalled. Click **OK**.



The installed version is displayed.

2-8 Step 8

When the installation finishes, click **Close**.

**3. Migrating Version 1 Data to Version 2**

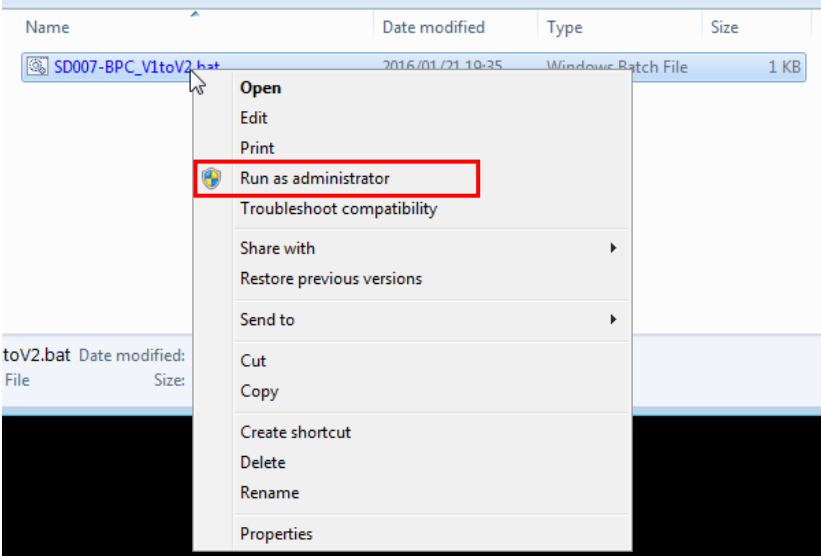
If you have installed Ver2 already, this work is unnecessary. Please advance towards chapter4 .

This section explains how to migrate data so that database of test condition profiles created with version 1 and environmental settings of each software can be used in version 2.

When data is migrated, the data of version 1 is copied for version 2, so version 1 data is backed up. This backup data can be used for troubleshooting when a problem occurs.

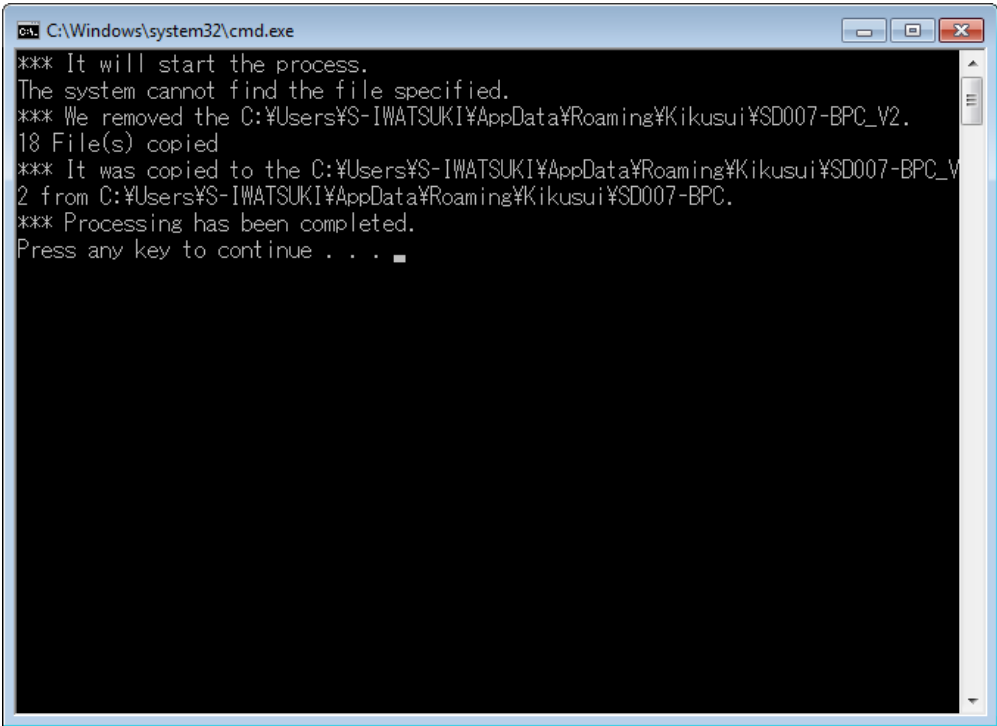
3-1 Step 1

From the unzipped files, select SD007-BPC_V1toV2.bat, right-click to show a shortcut menu, and click Run as administrator.



3-2 Step 2

The data is copied, and the following window appears. Press any key to finish the processing.

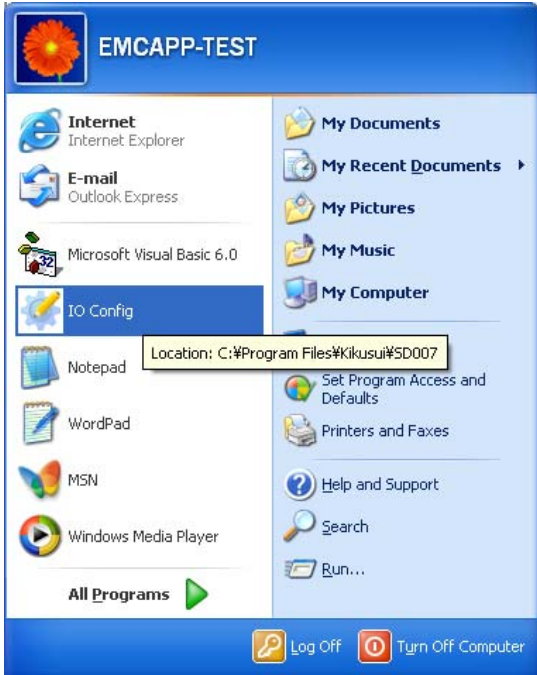


4. Updating the PFX2512 Firmware

The PFX25x2 (hardware) firmware must be updated.
Follow the procedure below to update the firmware.

4-1 Step 1

Start IO Config.



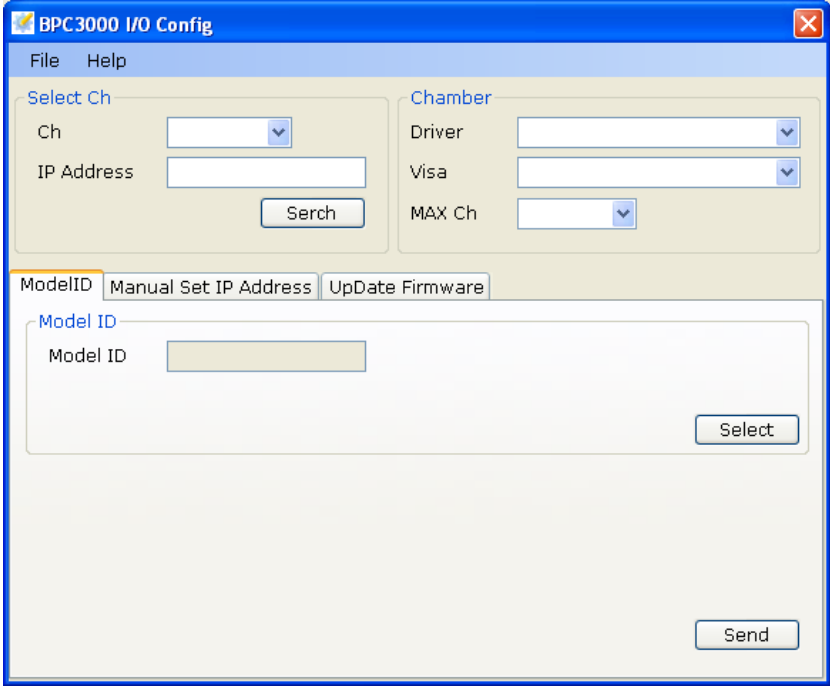
4-2 Step 2

If Visa is not installed, the following dialog box will appear.
Click OK.



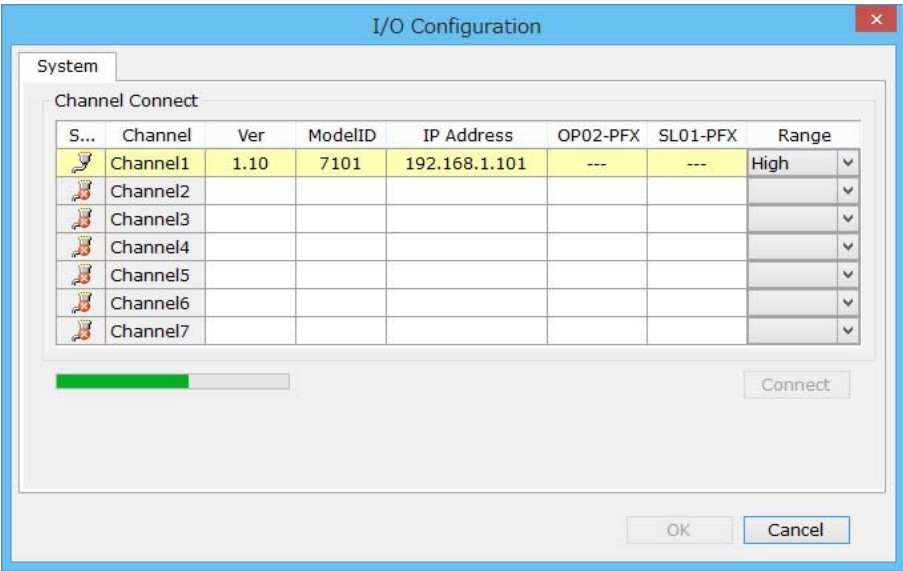
4-3 Step 3

After IO Config starts,
click **Serch**.



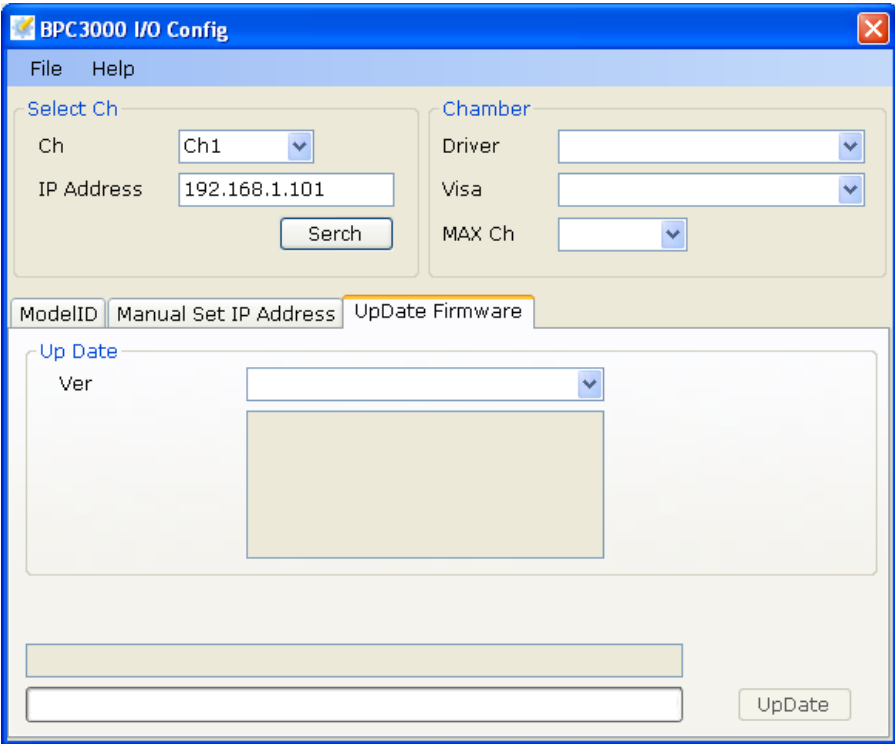
4-4 Step 4

When your PFX2512 is detected, click **OK** or **Cancel**.



4-5 Step 5

Select the channel to which the PFX2512 you want to update the firmware of is connected.

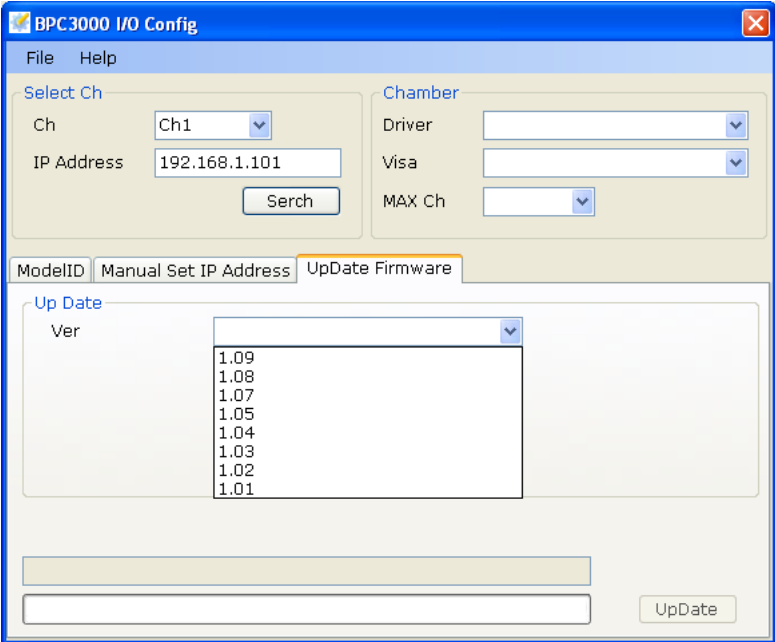


4-6 Step 6

From the drop-down list, select the latest version.

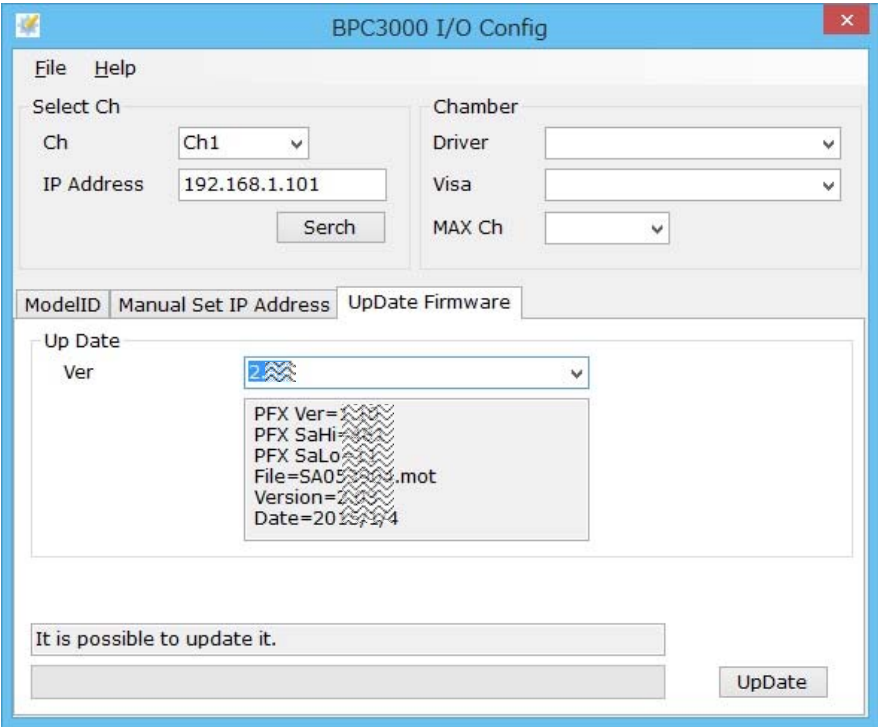
(Only the latest version may appear in the list.)

In the same case, the latest version and the version indicated in step4. The next work is unnecessary.



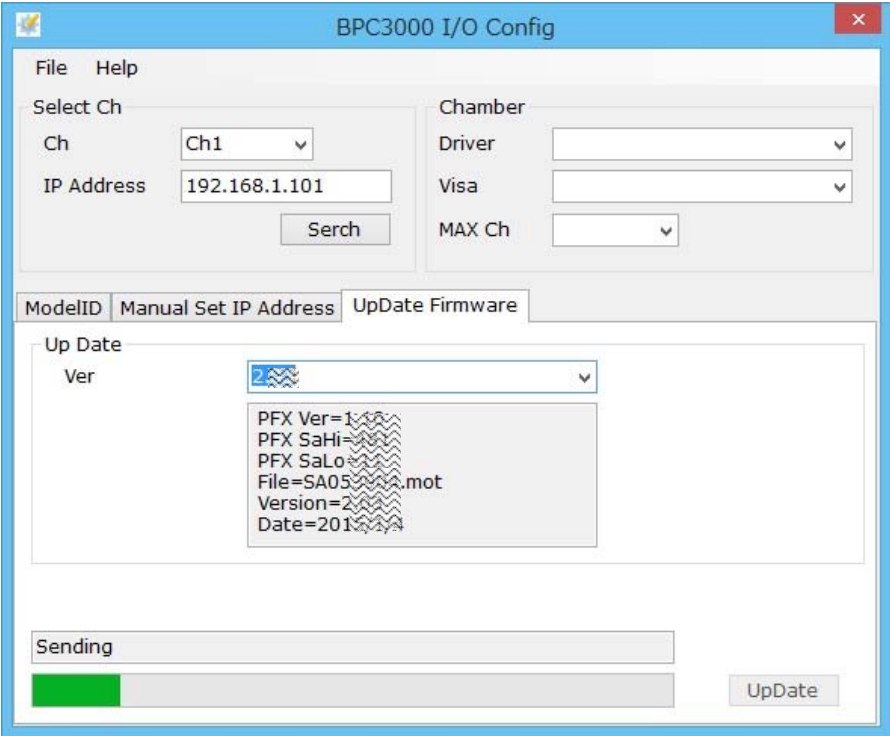
4-7 Step 7

Check that “It is possible to update it” is displayed, and click **Update**.



4-8 Step 8

The firmware transfer process starts.



4-9 Step 9

When the transfer finishes, the following dialog box appears.

Click OK, and then close IO Config.

Turn the PFX2512 off and then back on.



5. Updating the Model ID File

The model ID stored in the PFX25x2 (hardware) must be updated to a new model ID that supports version 2.

Follow the procedure below to update the model ID file.

5-1 Step 1

Turn the PFX25x2 on.

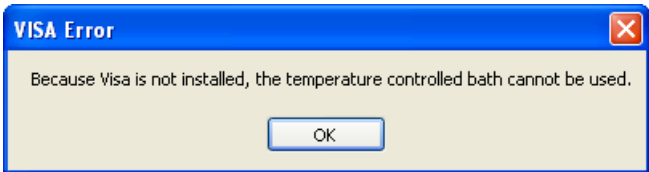
Start IO Config.



5-2 Step 2

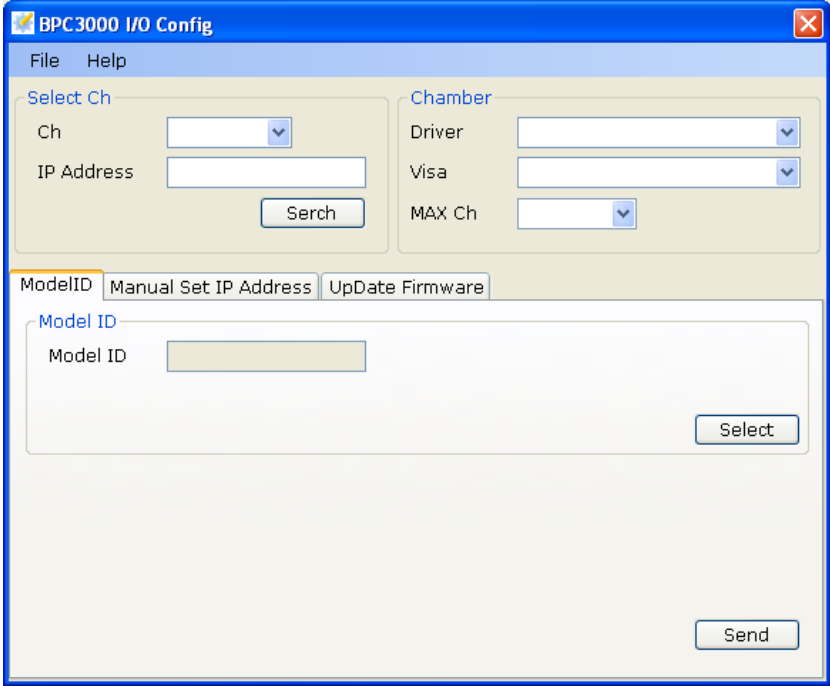
If Visa is not installed, the following dialog box will appear.

Click OK.



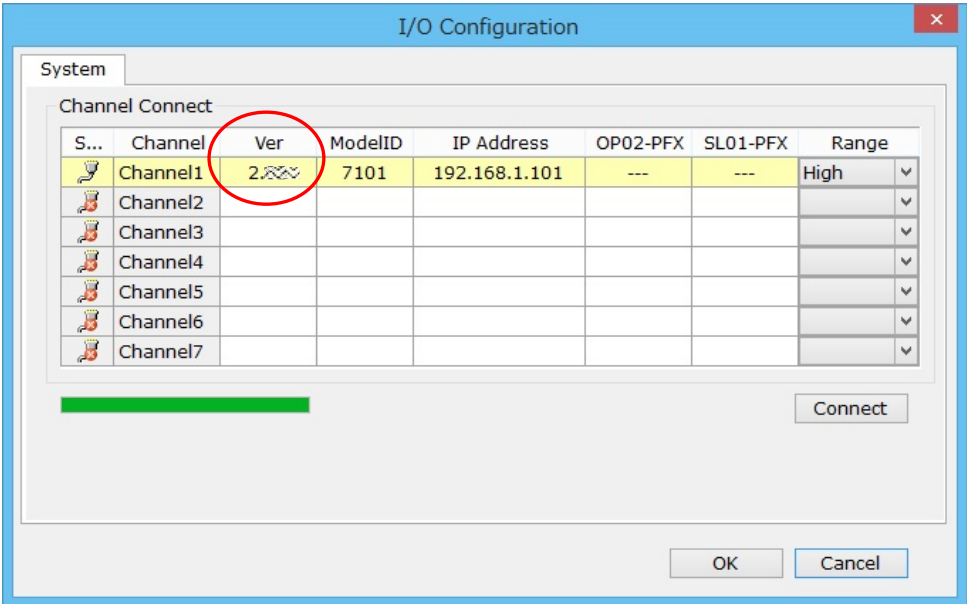
5-3 Step 3

After IO Config starts,
Click Serch.



5-4 Step 4

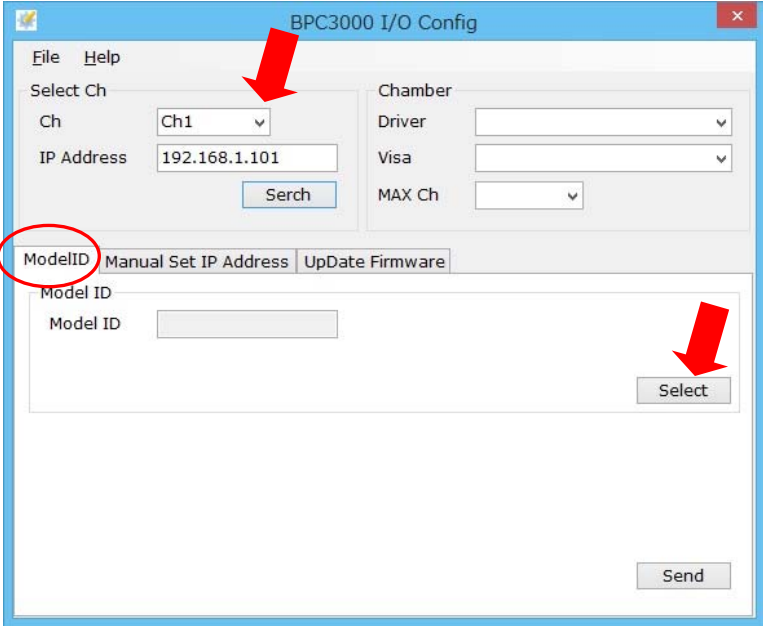
When your PFX25x2 is detected, click **OK** or **Cancel**.
(If the firmware has already been updated, the new version is displayed.)



5-5 Step 5

Select the channel to which the PFX25x2 you want to update the model ID file of is connected.

On the Model ID tab, click Select.



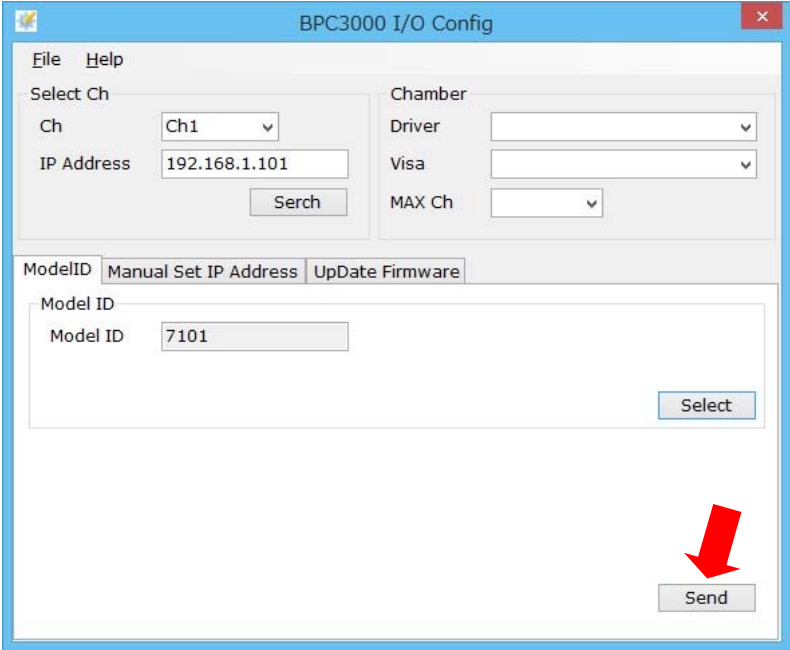
5-6 Step 6

From the model ID setting list, select the model ID that you are currently using, and click OK.



5-7 Step 7

Click **Send** to send the model ID data to the PFX25x2.



This completes the updating of the model ID file.
Close IO Config.

6. Verifying the Update

Verify that the update has been completed successfully.

6-1 Step 1

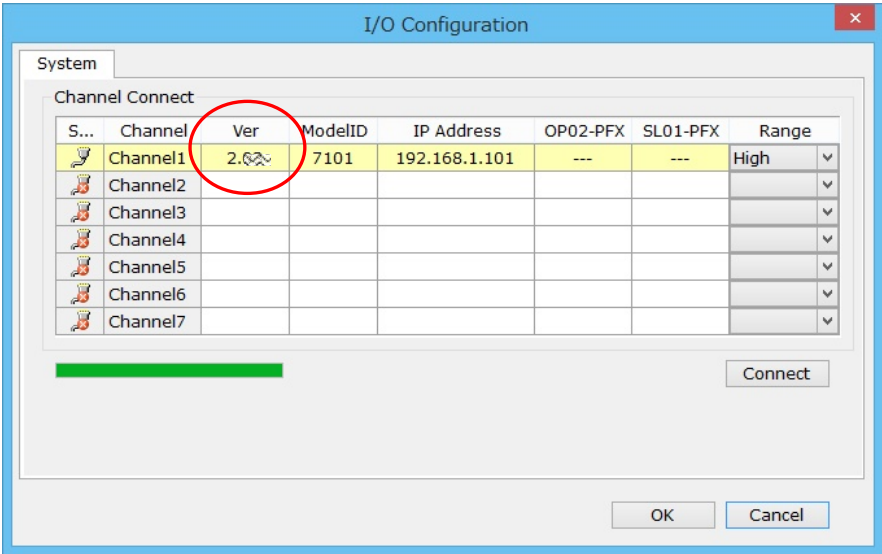
After the PFX2512 starts, start Test Executive again.



6-2 Step 2

The following dialog box appears.

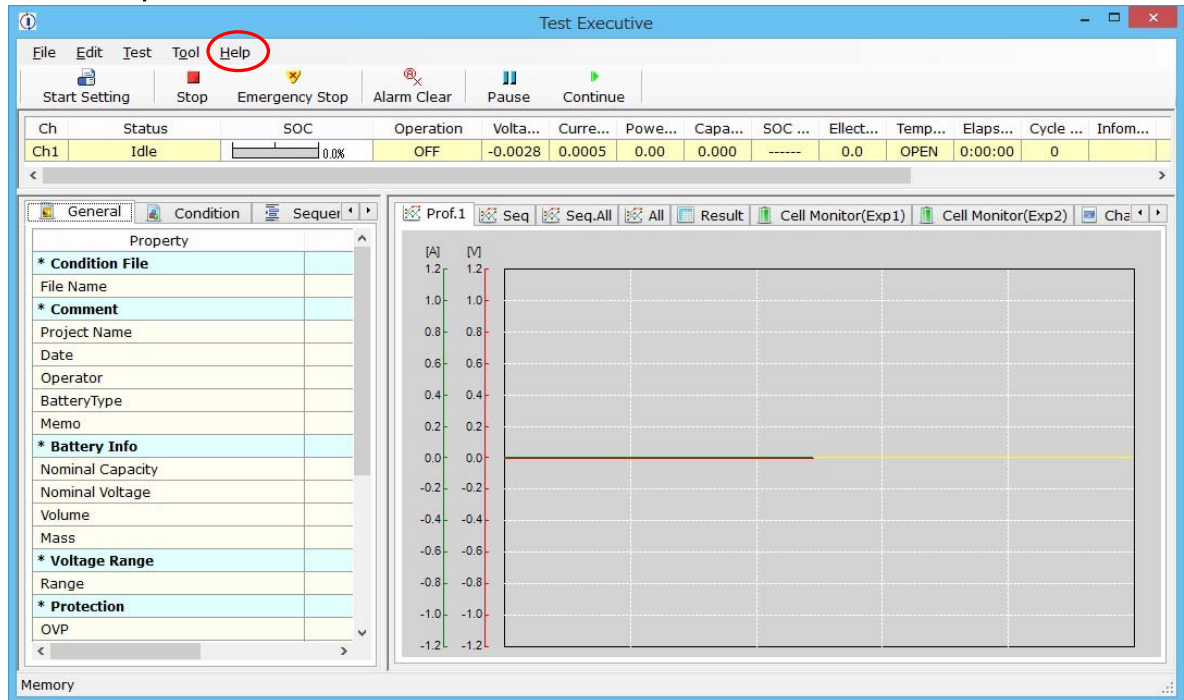
Check that the version has been updated to 2.05, and then click **OK** or **Cancel**.



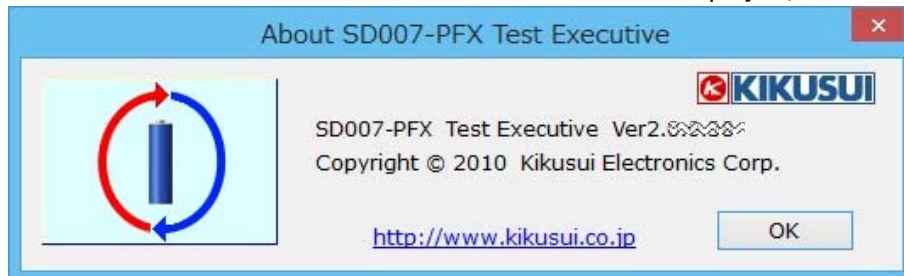
6-3 Step 3

The Test Executive main window appears.

On the **Help** menu, click **About**.

**6-4 Step 4**

Check that SD007-PFX Test Executive Ver2.0.2.11 is displayed, and click **OK**.



This completes the update procedure.

7. Reverting Back to the Old Version

If a problem occurs such as not being able to open test conditions of version 1 after updating to version 2, it is possible to revert temporarily to version 1.*

* The version will be Ver. 1.4.9.0.

Notes

- Have a person who knows how to operate BPChecker3000 perform this procedure.
- Reverting to the older version requires a BPChecker3000 Ver. 1 installation CD-R.
- Test conditions created with version 2 cannot be used with version 1.
- Test data acquired with version 2 cannot be used on GraphViewer of version 1.

7-1 Step 1

Close all the following programs, which compose SD007-PFX BPChecker3000.
IO Config , Test Condition Editor , Test Executive , Graph Viewer

7-2 Step 2

In Windows Control Panel, click Uninstall a program,
select Kikusui BPChecker3000(Ver 2.x.x.xx) UPDATE, and uninstall it.

7-3 Step 3

Install Version 1 using your SD007-PFX BPChecker3000 Ver. 1 CD-R.

7-4 Step 4

From the Kikusui download webpage, download the SD007-PFX(BPChecker3000)
Ver. 1 update, namely b3k_update_1_4_9_OR.exe.

7-5 Step 5

Run b3k_update_1_4_9_OR.exe to update to Ver. 1.4.9.0.

7-6 Step 6

Start IO Config, and use UpDate Firmware to update to Ver. 1.10.

Close IO Config, and restart PFX25x2.

7-7 Step 7

Start IO Config, and update the model ID.

Select the same ID as the model ID already assigned to the PFX, and send it.

This makes the model ID compatible with version 1.

This completes the procedure for reverting to version 1.

Use test conditions that were backed up (files created with version 1).